

# Fábrica de bambú de Wuyishan

Fujian, China

HUA Li / TAO (Trace  
Architecture Office)

2011-2013

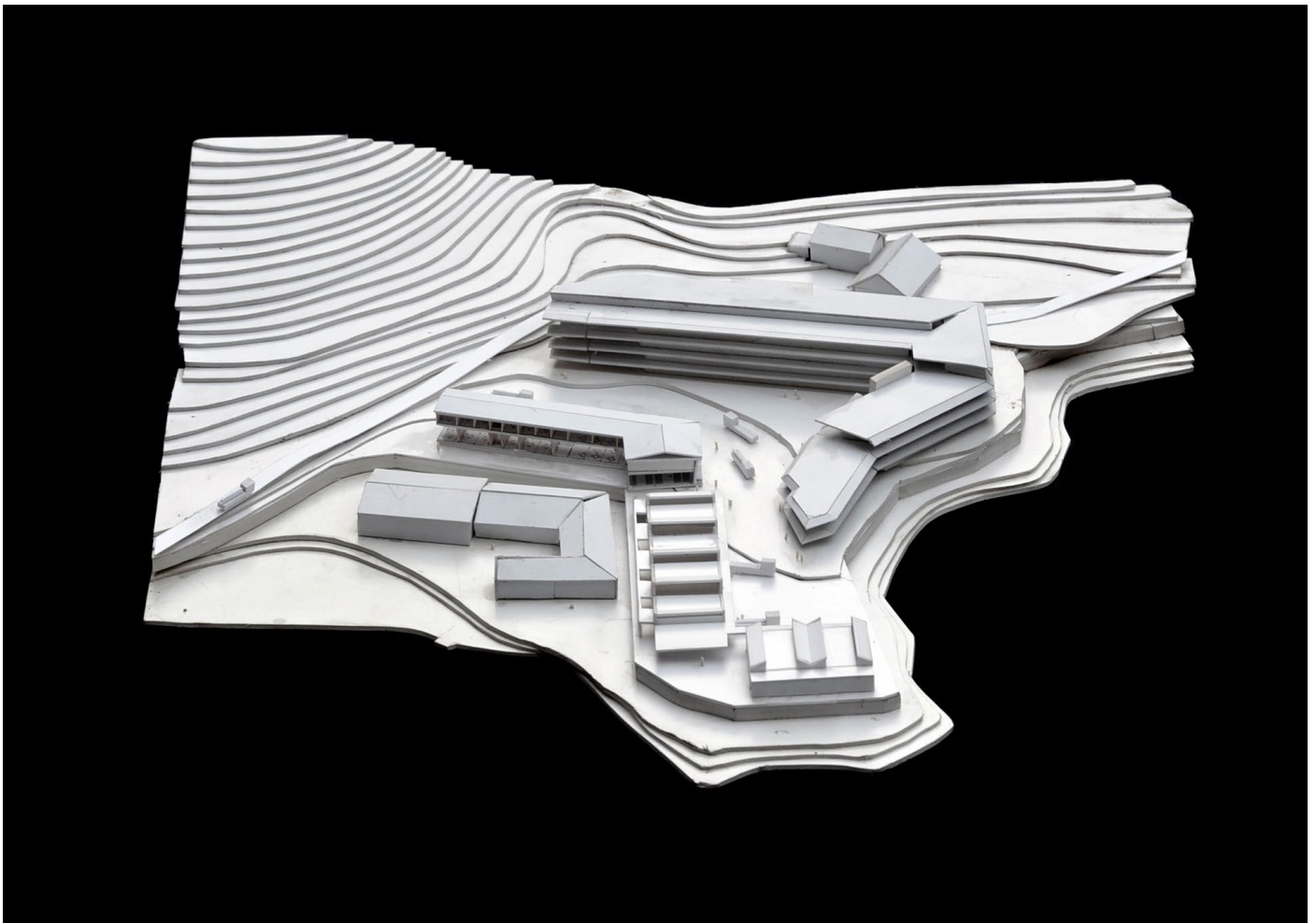


Situada sobre una meseta en una zona rural de Xingcun, el complejo se compone de un almacén y zona de manipulación de bambú. Cada invierno se recogen 22.000 cañas de bambú que se almacenan en este edificio siguiendo un periodo de manipulación del mismo.

El diseño arquitectónico refleja el propio programa del edificio, su topografía y los requerimientos. La planta con forma de "L" acomoda seis zonas con fuego para el doblado y ensamblaje del bambú. El interior del taller es un diseño abierto de 14 metros de luz, espacio requerido para el trabajo. Además de las zonas de trabajo, el taller incluye zonas de descanso, almacenes, servicios, patios y otras funciones secundarias. También se disponen espacios de oficina y dormitorio, en forma de galería, ocupando la primera planta, y una cafetería en la segunda. Esta galería permite colocar en el interior las cañas de bambú a la sombra, de forma que además de estar protegidas, se encuentran ventiladas.

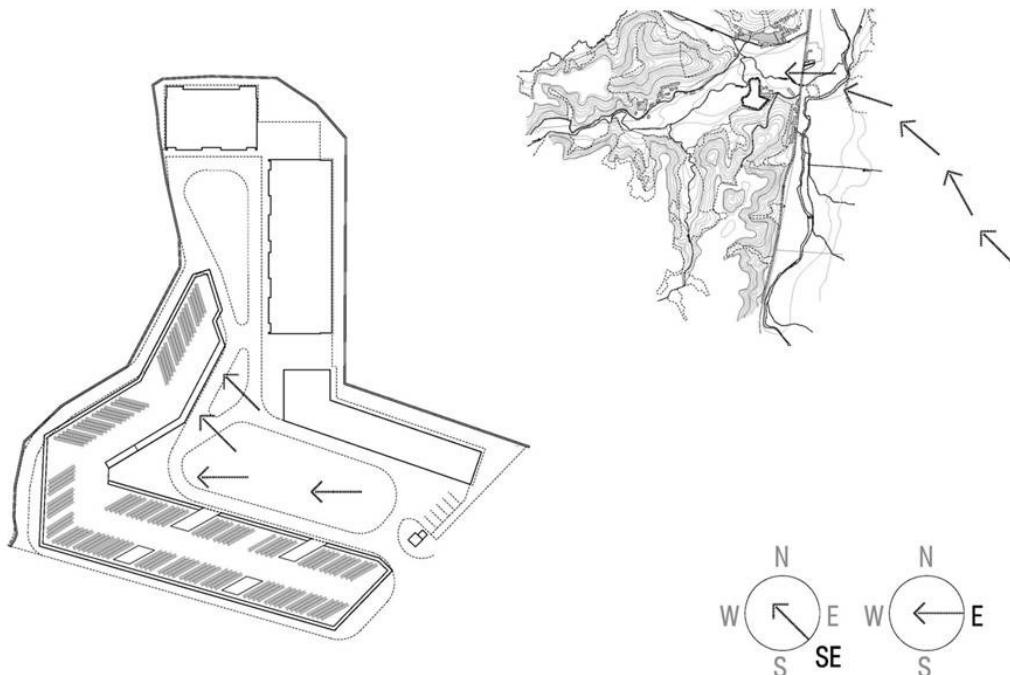
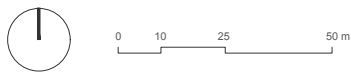
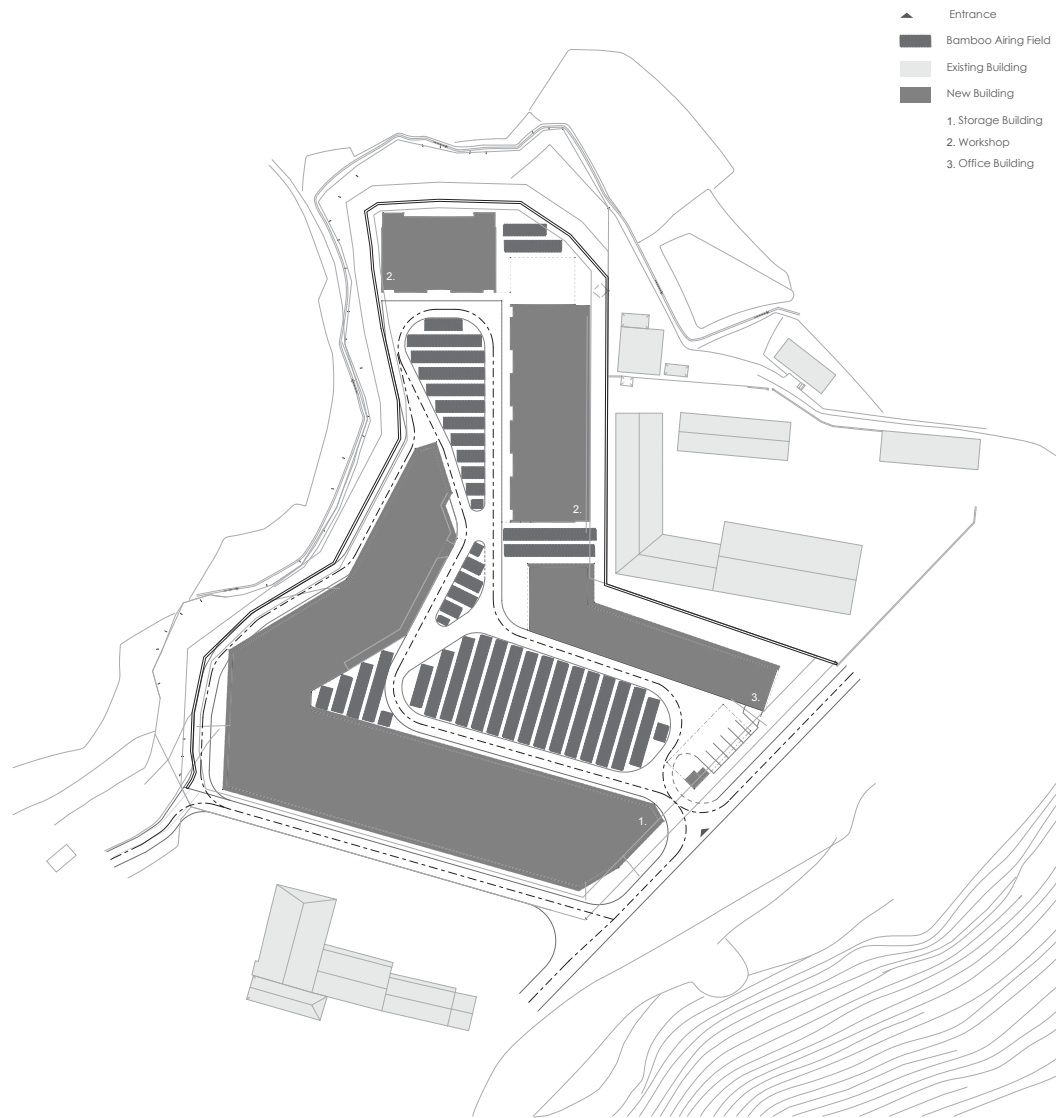
Considerando el emplazamiento, se ha utilizado hormigón in situ para la estructura, y bloques de hormigón hueco para el muro exterior, tejas de cemento para la cubierta y bambú y madera para puertas, sistemas de sombra, ventanas y pasamanos. Sin acabado, los materiales terminan por mostrarse naturales, tal y como son.

El carácter industrial del proyecto no permite un diseño superfluo. Utilizando los materiales más básicos de construcción, la arquitectura revela de manera natural su estructura y su lógica. El proyecto concilia simplicidad estética con economía de medios, en la que la arquitectura puede demostrar su resolución formal y función.





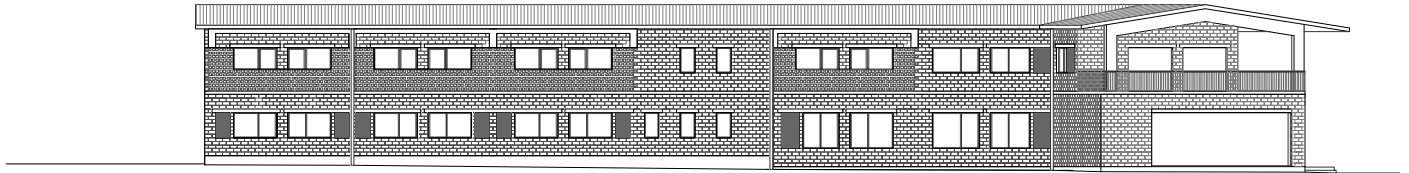








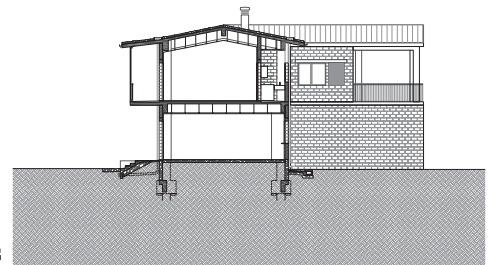
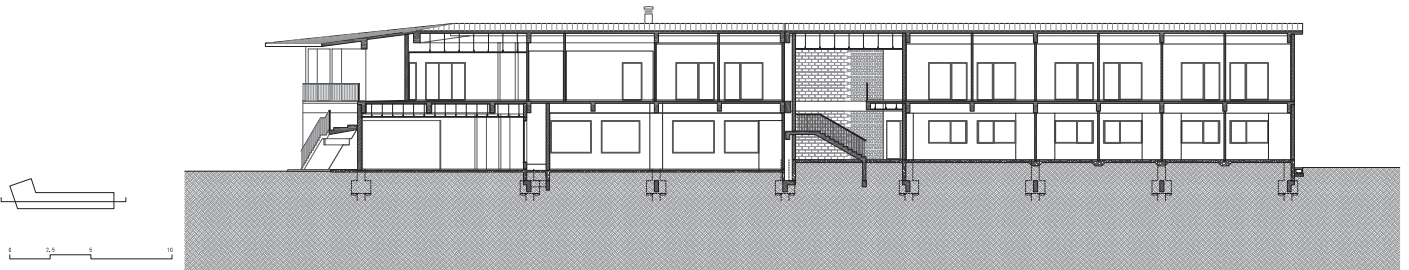
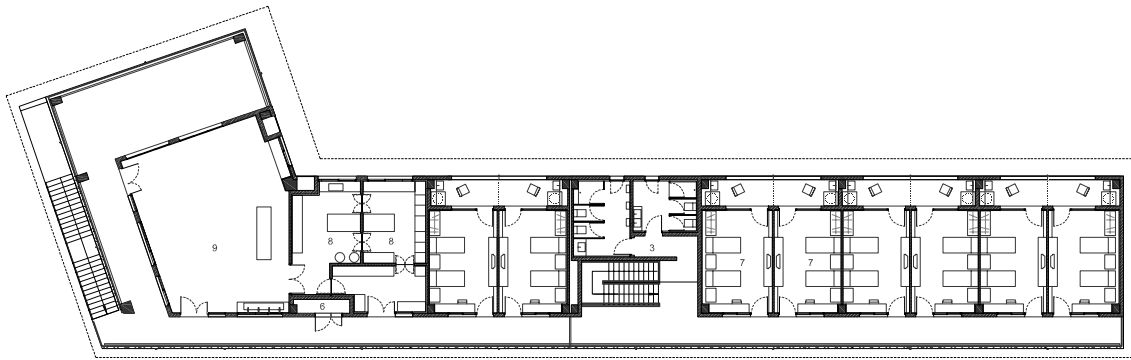




office building elevation north



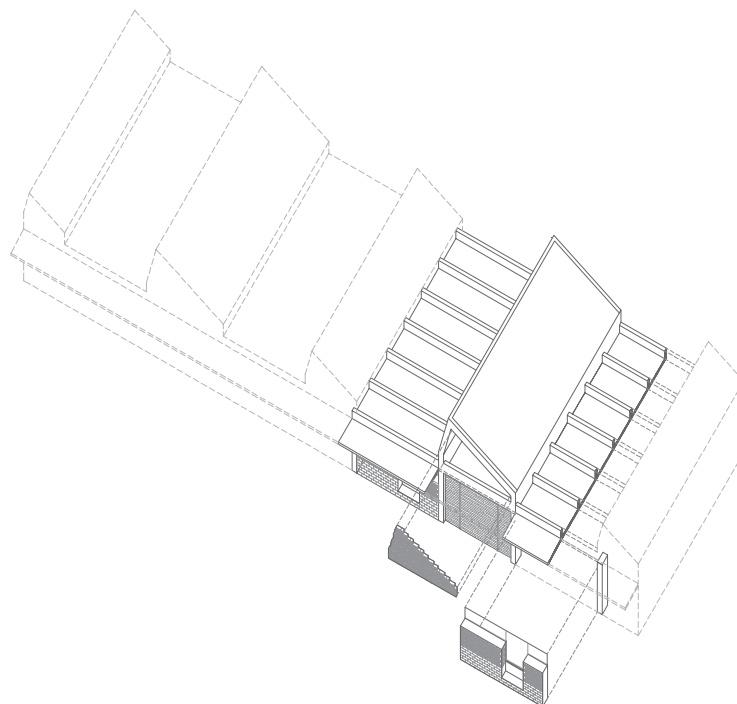
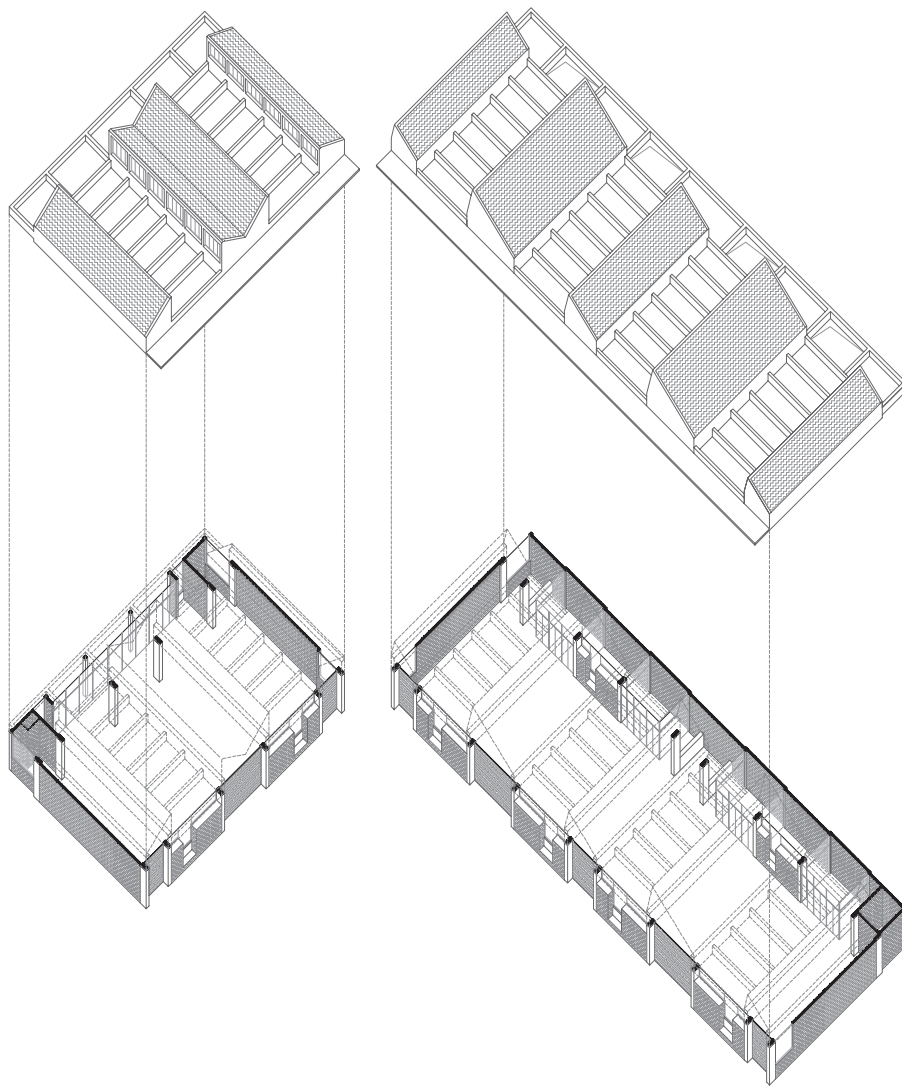
office building elevation south





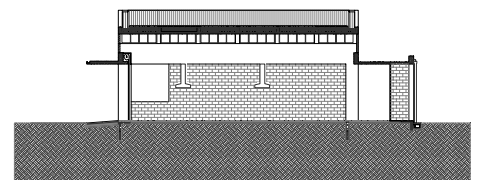
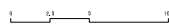
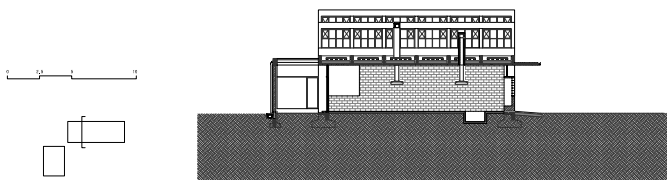
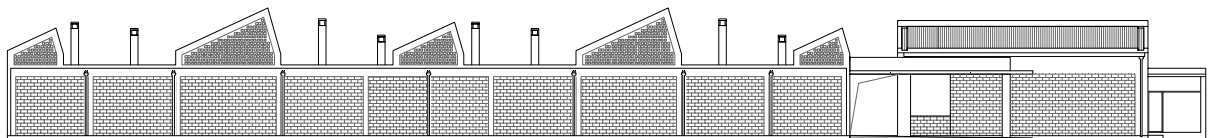
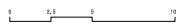
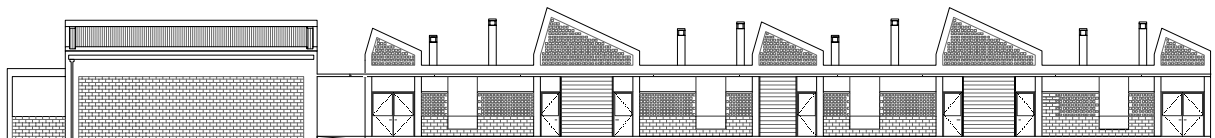
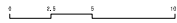
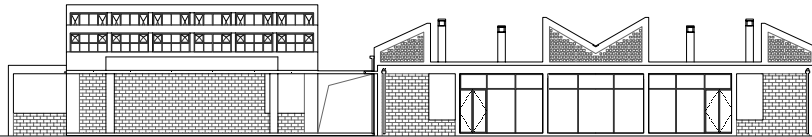
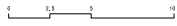
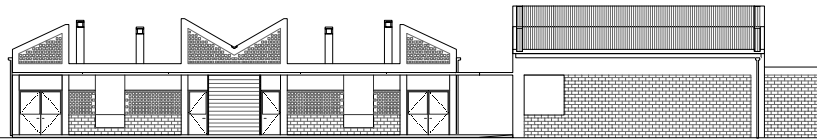








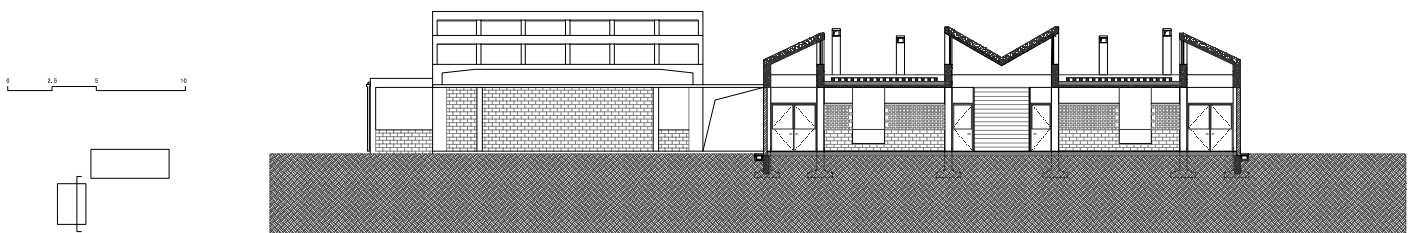
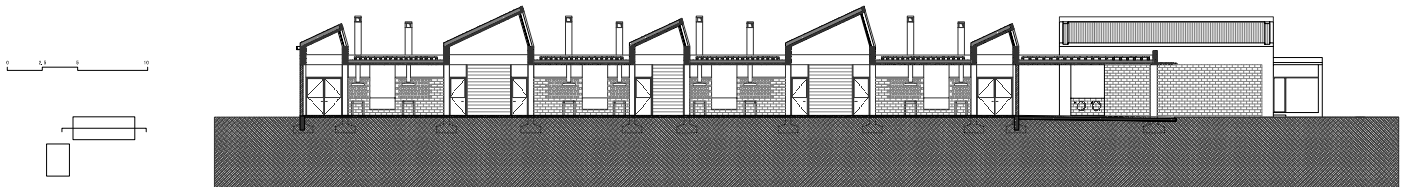
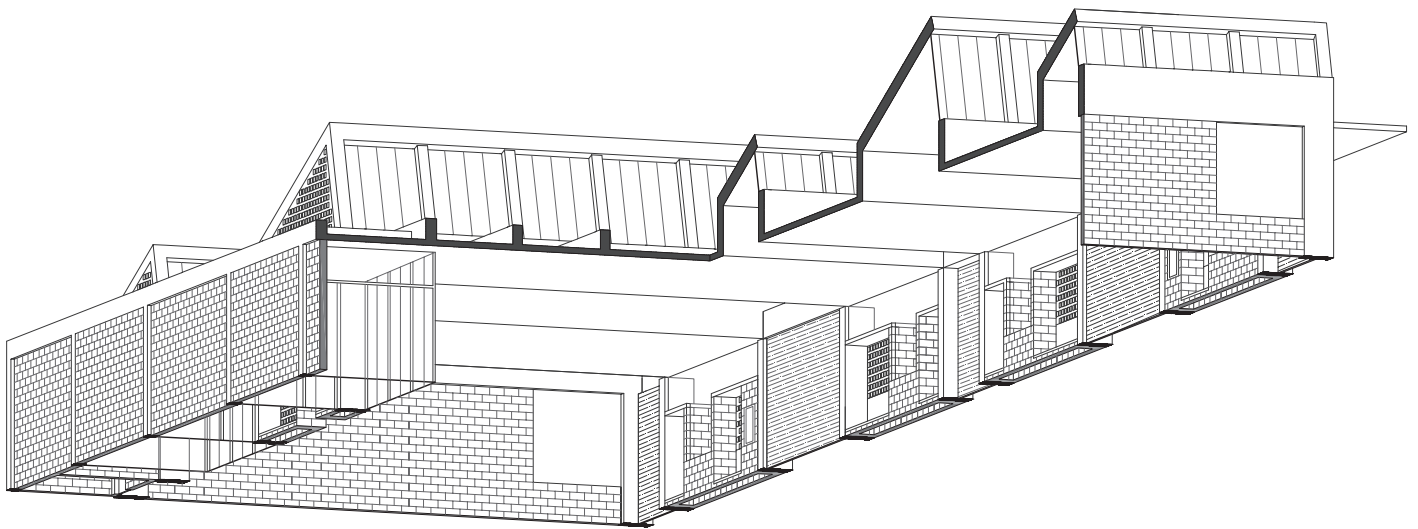
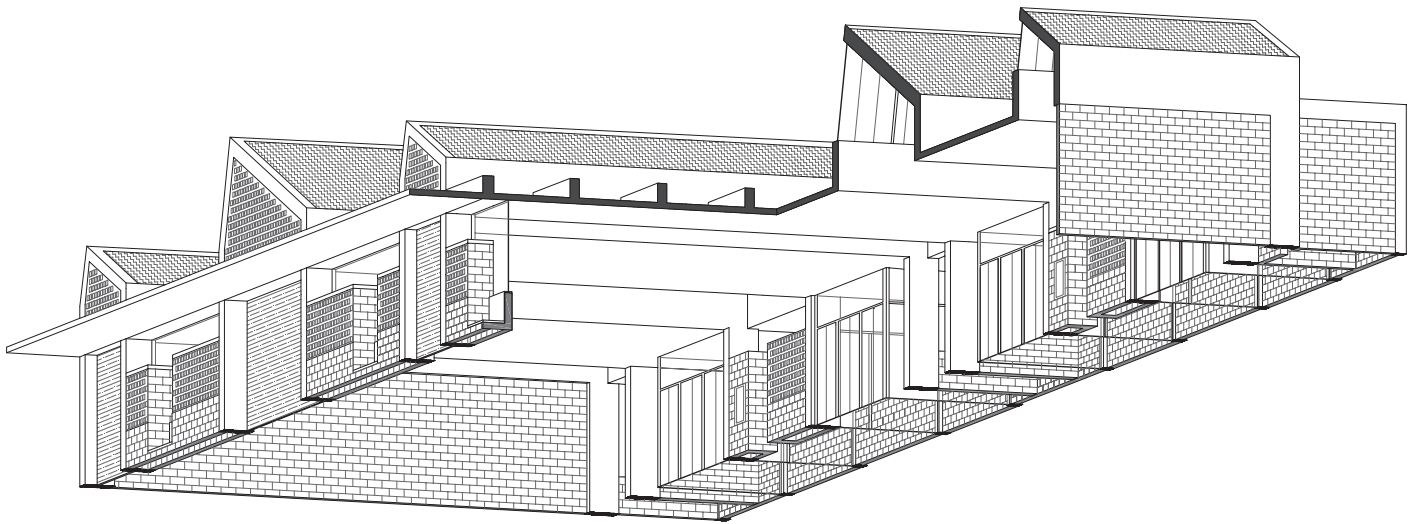








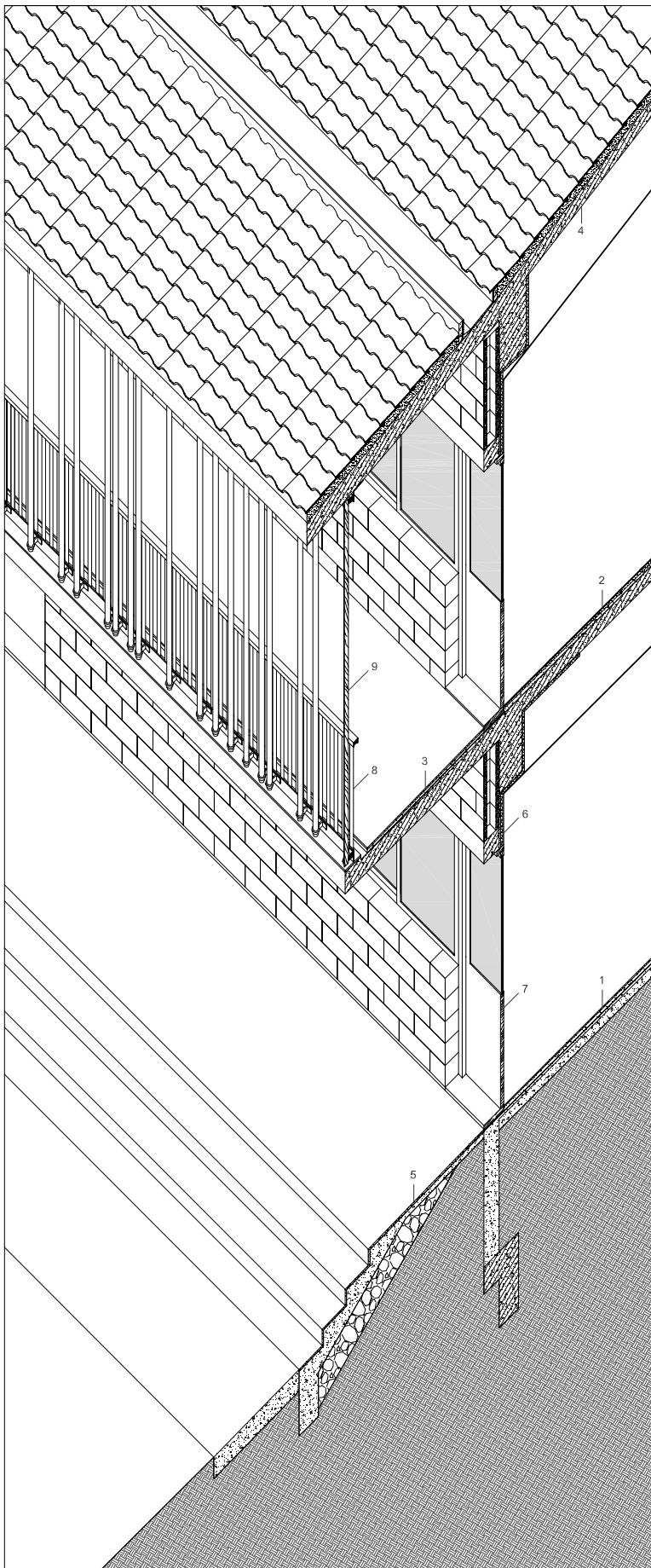






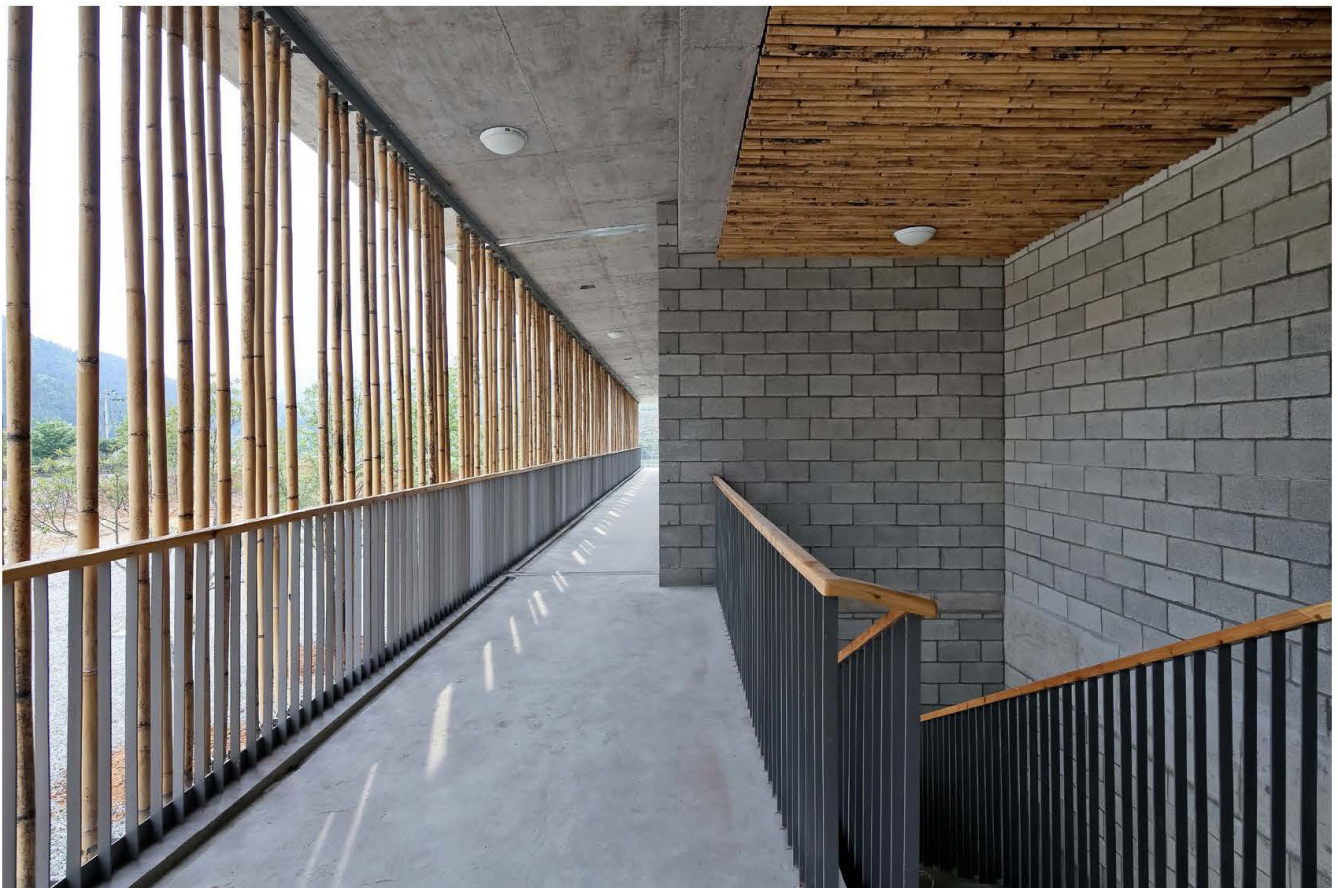




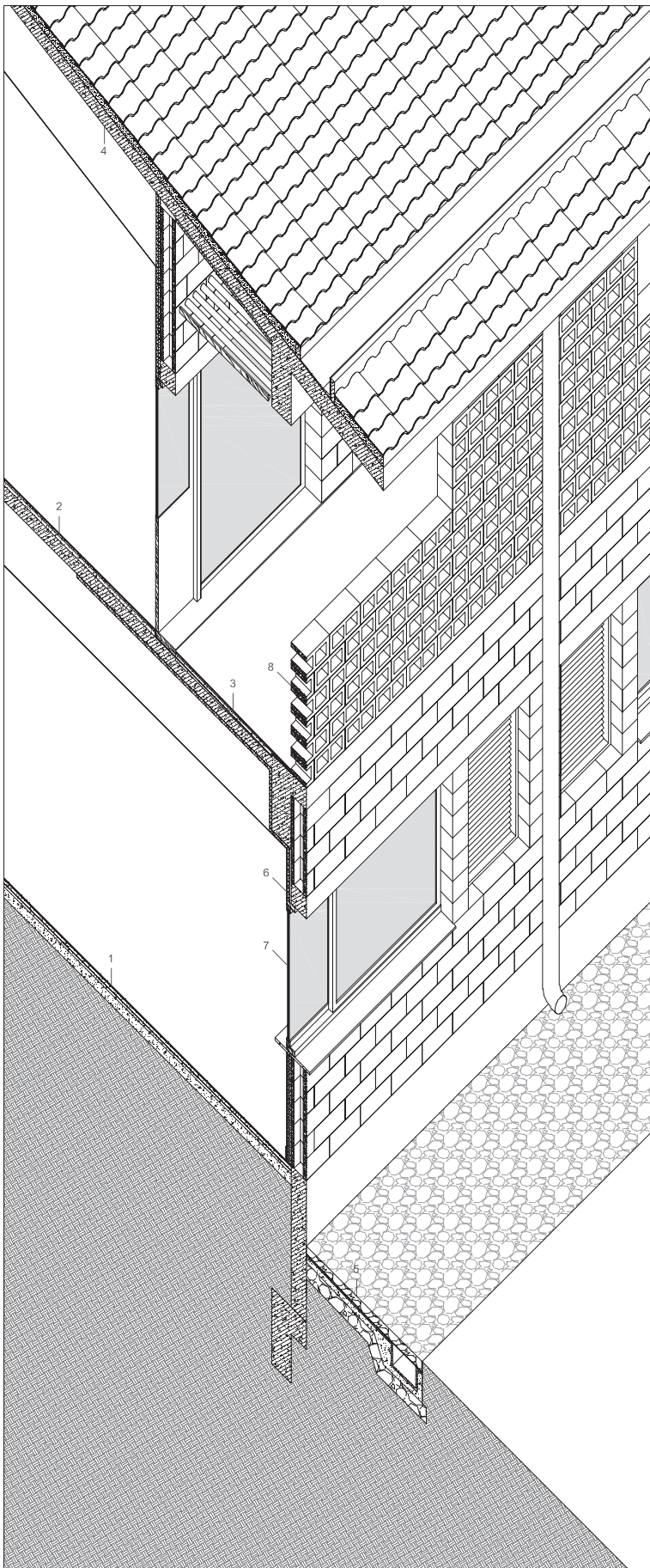


- |  |  |
|--|--|
| <p>1. 15 mm 水泥砂浆<br/>35 mm 细石混凝土<br/>2 mm 防水层<br/>30 mm 细石混凝土找平层<br/>60 mm 混凝土垫层</p> <p>2. 10 mm 地垫<br/>20 mm 水泥砂浆结合层<br/>40 mm 细石混凝土找平层<br/>140 mm 钢筋混凝土楼板上<br/>石膏板吊顶</p> <p>3. 15 mm 水泥砂浆<br/>30 mm 细石混凝土保护层<br/>2 mm 防水层<br/>110 mm 钢筋混凝土楼板上</p> <p>4. 波形瓦<br/>水泥砂浆嵌瓦层, 最薄处 20mm<br/>30 mm 保温层<br/>2 mm 防水层<br/>15 mm 水泥砂浆找平层<br/>150 mm 钢筋混凝土屋面板</p> <p>5. 20 mm 水泥砂浆<br/>60 mm 素混凝土<br/>300 mm 卵石垫层</p> <p>6. 表面清漆<br/>190 mm 清水混凝土砌块砖<br/>20 mm 防水砂浆<br/>30 mm 保温砂浆<br/>8 mm 粉刷层<br/>内墙面</p> <p>7. 实木门</p> <p>8. 钢栏杆</p> <p>9. Ø50 mm 竹子遮阳</p> | <p>1. 15 mm cement mortar<br/>35 mm fine aggregate concrete<br/>2 mm water barrier<br/>30 mm fine aggregate concrete screed<br/>60 mm concrete bedding</p> <p>2. 10 mm floor tile<br/>20 mm cement mortar<br/>40 mm fine aggregate concrete screed<br/>140 mm reinforced concrete floor slab<br/>suspended ceiling with plaster board</p> <p>3. 15 mm cement mortar<br/>30 mm protective fine aggregate concrete<br/>2 mm water barrier<br/>110 mm reinforced concrete floor slab</p> <p>4. pantile<br/>cement mortar with minimum 20mm thickness<br/>30 mm thermal insulation<br/>2 mm water barrier<br/>15 mm cement mortar screed<br/>150 mm reinforced concrete roof slab</p> <p>5. 20 mm cement mortar<br/>60 mm plain concrete<br/>300 mm gravel bedding</p> <p>6. varnish finish<br/>190 mm hollow-core concrete brick<br/>20 mm water-insulating mortar<br/>30 mm thermal-insulating mortar<br/>8 mm plaster layer<br/>inner finish</p> <p>7. solid wood door</p> <p>8. steel handrail</p> <p>9. Ø50 mm bamboo</p> |
|--|--|





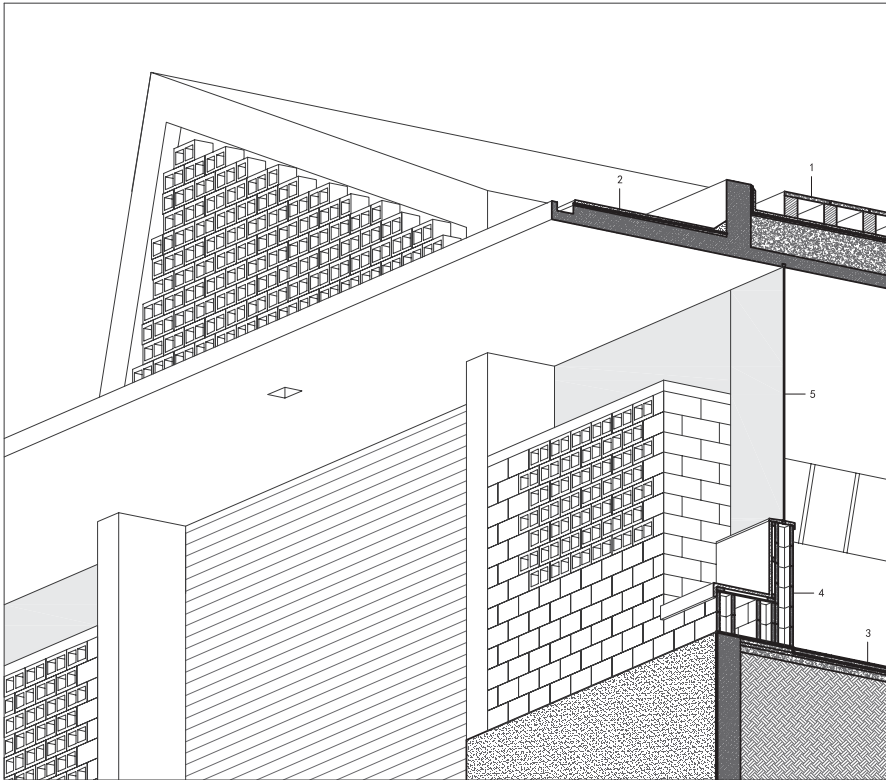




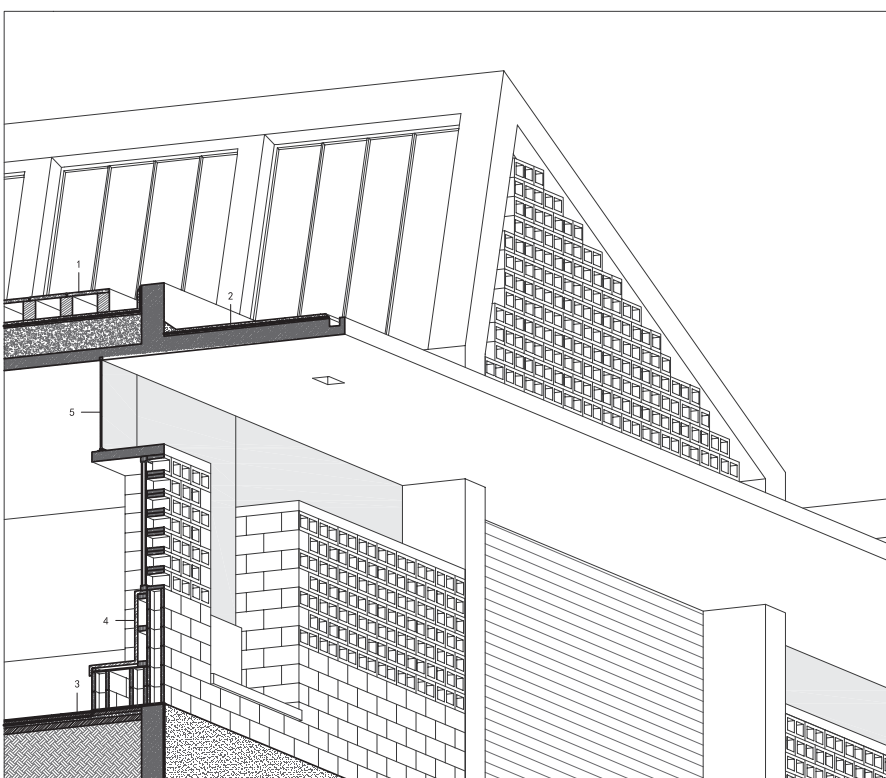
- |   |   |
|---|---|
| 1. 15 mm 水泥砂浆<br>35 mm 细石混凝土<br>2 mm 防水层<br>30 mm 细石混凝土抹平<br>60 mm 混凝土垫层                | 1. 15 mm cement mortar<br>35 mm concrete with fine aggregate<br>2 mm water barrier<br>30 mm fine aggregate concrete screed<br>60 mm concrete bedding                            |
| 2. 10 mm 地砖<br>20 mm 水泥砂浆结合层<br>40 mm 细石混凝土抹平<br>140 mm 钢筋混凝土楼板<br>石膏板吊顶                | 2. 10 mm floor tile<br>20 mm cement mortar<br>40 mm fine aggregate concrete screed<br>140 mm reinforced concrete floor slab<br>suspended ceiling with plaster board             |
| 3. 15 mm 水泥砂浆<br>30 mm 细石混凝土保护层<br>2 mm 防水层<br>110 mm 钢筋混凝土楼板                           | 3. 15 mm cement mortar<br>30 mm protective fine aggregate concrete<br>2 mm water barrier<br>110 mm reinforced concrete floor slab   |
| 4. 波形瓦<br>水泥砂浆卧瓦层, 叠薄处 20mm<br>30 mm 保温层<br>2 mm 防水层<br>15 mm 水泥砂浆找平层<br>150mm 钢筋混凝土屋面板 | 4. pantile<br>cement mortar, with minimum 20mm thickness<br>30 mm thermal insulation<br>2 mm water barrier<br>15 mm cement mortar screed<br>150mm reinforced concrete roof slab |
| 5. 100 mm 卵石垫层<br>5 mm 金属盖板<br>20 mm 水泥砂浆面层<br>60 mm 素混凝土<br>300 mm 卵石垫层                | 5. 100 mm gravel<br>5 mm metal panel<br>20 mm cement mortar<br>60 mm plain concrete<br>300 mm gravel bedding  |
| 6. 表面清漆<br>190 mm 清水混凝土砌块砖<br>20 mm 防水砂浆<br>30 mm 保温砂浆<br>8 mm 粉刷层<br>内墙面               | 6. varnish finish<br>190 mm hollow-core concrete brick<br>20 mm water-insulating mortar<br>30 mm thermal-insulating mortar<br>8 mm plaster layer<br>inner finish                |
| 7. 铝合金门窗<br>内墙面   | 7. aluminum alloy window<br>inner finish  |
| 8. 190 mm 清水混凝土砌块砖  | 8. 190 mm hollow-core concrete brick  |





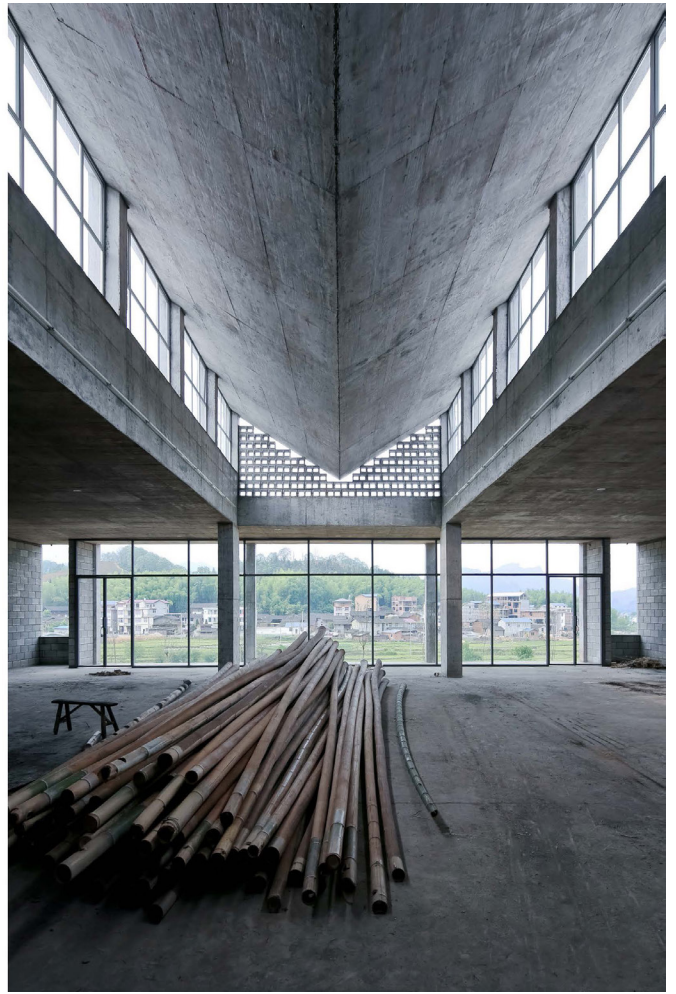
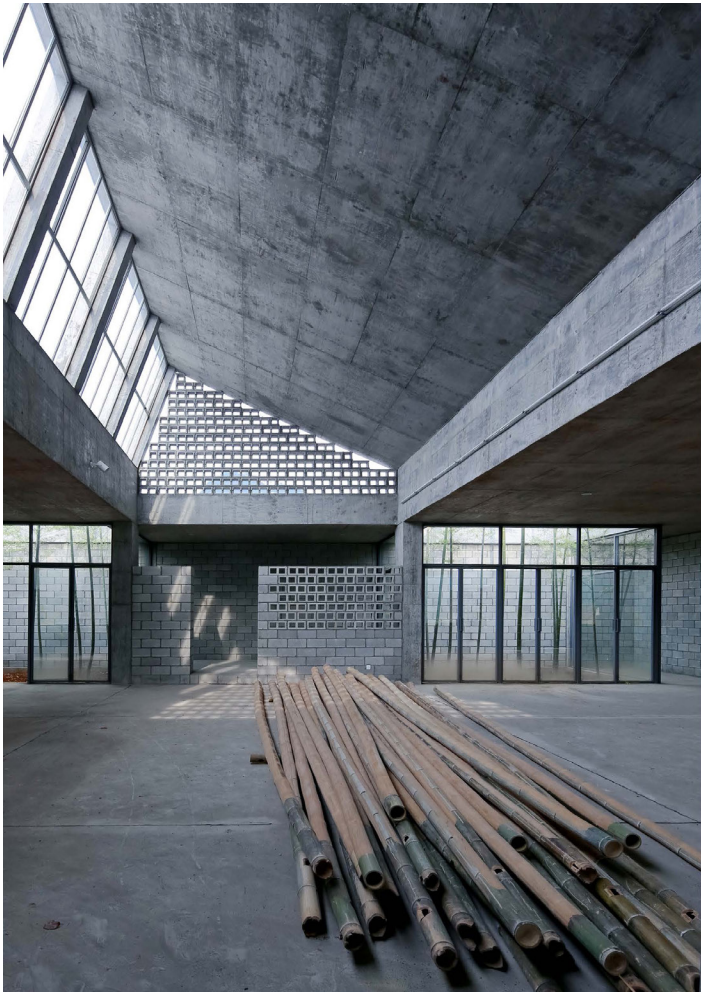


- |   |   |   |  |
|---|---|---|--|
| 1 | 35 mm 预制钢筋混凝土梁空板<br>190 mm 混凝土空心砌块<br>20 mm 水泥砂浆保护层<br>10 mm 砂浆隔离层<br>4 mm 沥青卷材<br>20 mm 水泥砂浆找平层<br>30 mm 混凝土2%找坡<br>钢筋混凝土屋面板 | 1 | 35 mm prefabricated reinforced concrete built on sills<br>190 mm hollow-core concrete brick<br>20 mm cement topping<br>10 mm separating layer<br>4 mm bitumenised roofing felt<br>20 mm cement screed<br>30 mm 2% concrete sloping screed<br>reinforced concrete roof slab |
| 2 | 20 mm 水泥砂浆保护层<br>10 mm 砂浆隔离层<br>2 mm 防水涂料<br>20 mm 水泥砂浆找坡抹平<br>钢筋混凝土屋面板   | 2 | 20 mm cement topping<br>10 mm separating layer<br>2 mm bitumenised felt<br>20 mm cement screed<br>reinforced concrete roof slab  |
| 3 | 15 mm 水泥砂浆<br>35 mm 细石混凝土<br>2 mm 防水涂料<br>水泥砂浆找坡抹平<br>混凝土垫层<br>素土   | 3 | 15 mm cement mortar<br>35 mm fine aggregate concrete<br>2 mm waterproofing coating<br>cement screed<br>concrete ground slab<br>soil  |
| 4 | 190 mm 清水混凝土砌块砖<br>单层钢化玻璃   | 4 | 190 mm concrete brick<br>single toughened glass  |
| 5 |   | 5 |  |

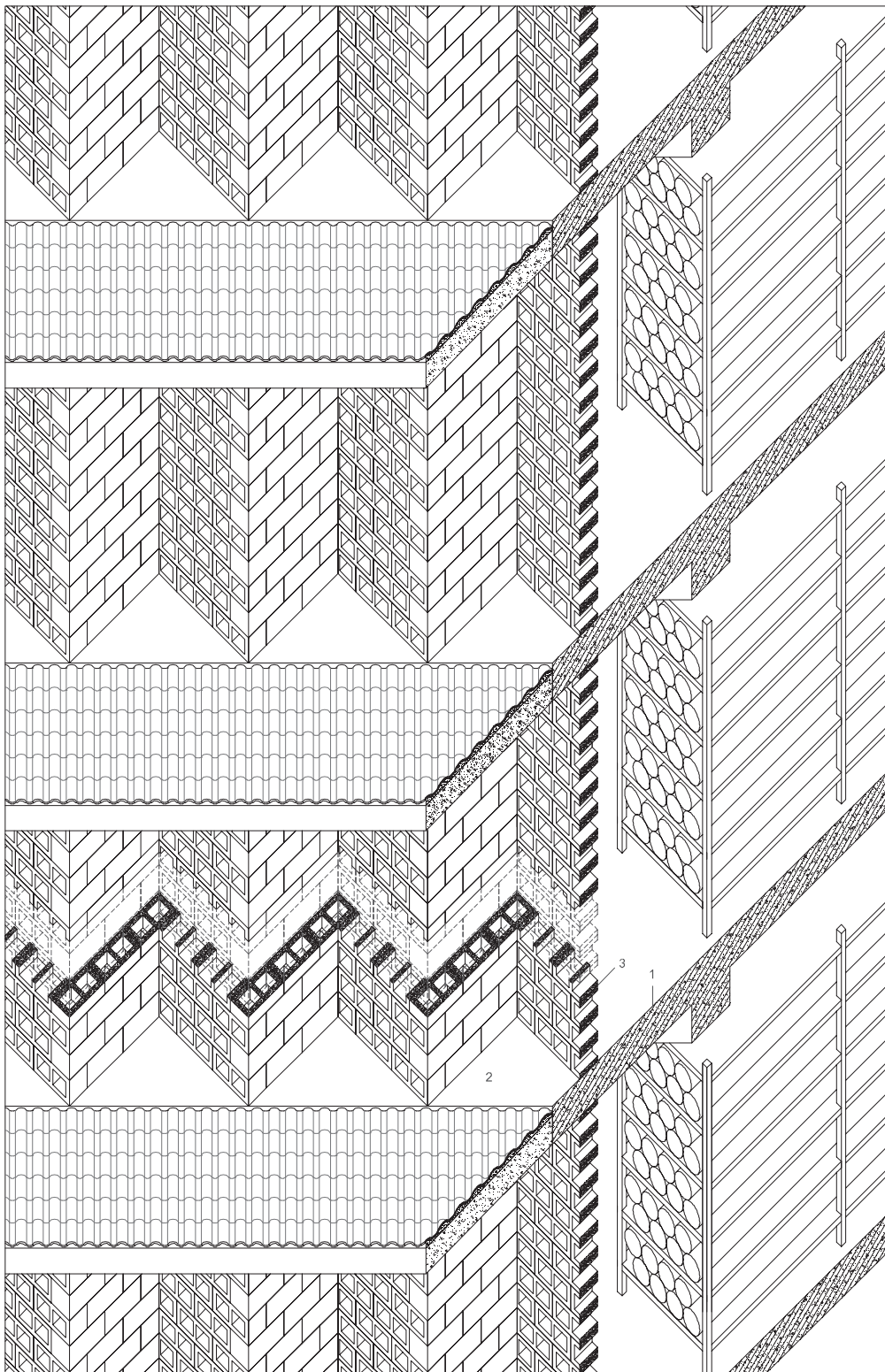


- |   |   |   |  |
|---|---|---|--|
| 1 | 35 mm 预制钢筋混凝土梁空板<br>190 mm 混凝土空心砌块<br>20 mm 水泥砂浆保护层<br>10 mm 砂浆隔离层<br>4 mm 沥青卷材<br>20 mm 水泥砂浆找平层<br>30 mm 混凝土2%找坡<br>钢筋混凝土屋面板 | 1 | 35 mm prefabricated reinforced concrete built on sills<br>190 mm hollow-core concrete brick<br>20 mm cement topping<br>10 mm separating layer<br>4 mm bitumenised roofing felt<br>20 mm cement screed<br>30 mm 2% concrete sloping screed<br>reinforced concrete roof slab |
| 2 | 20 mm 水泥砂浆保护层<br>10 mm 砂浆隔离层<br>2 mm 防水涂料<br>20 mm 水泥砂浆找坡抹平<br>钢筋混凝土屋面板   | 2 | 20 mm cement topping<br>10 mm separating layer<br>2 mm bitumenised felt<br>20 mm cement screed<br>reinforced concrete roof slab  |
| 3 | 15 mm 水泥砂浆<br>35 mm 细石混凝土<br>2 mm 防水涂料<br>水泥砂浆找坡抹平<br>混凝土垫层<br>素土   | 3 | 15 mm cement mortar<br>35 mm fine aggregate concrete<br>2 mm waterproofing coating<br>cement screed<br>concrete ground slab<br>soil  |
| 4 | 190 mm 清水混凝土砌块砖<br>单层钢化玻璃   | 4 | 190 mm concrete brick<br>single toughened glass  |
| 5 |   | 5 |  |























Fábrica de bambú de Wuyishan  
Cliente: WuyishanTourism Development Incorporated Company  
Emplazamiento: Xingcun Town, Wuyishan Mountain, Fujian, China  
Arquitecto: HUA Li / TAO (Trace Architecture Office)  
Equipo: HUA Li, Elisabet Aguilar Palau, Zhang Jie, Laijing Zhu, Lai  
Erxun, Martino Aviles, Jiang Nan, Shi Weiwen, LianJunqin  
Superficie: 14,629m2  
Fecha: 2011-2013  
Fotografía: Su Shengliang