

25 mm Plywood with exterior varnish finishes for weather treatment; Philips Flat Head Screws M4 x 8, 2 mm, 18 mm length bolted from floor metal frame to Plywood deck

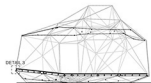
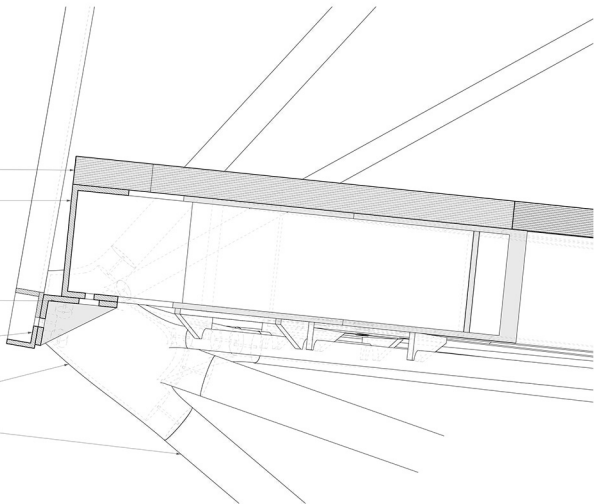
50 mm Width, 100 mm Depth, 5 mm Thickness S20 Steel C-Channel with white powder coat finishes; elongated slot for Socket Head Screws M8 x 1.25 mm, 20 mm length bolted from connector profile to C-Channel; internal slot for Philips Flat Head Screws M4 x 8, 2 mm, 18 mm length bolted from floor metal frame to Plywood deck

100 mm Length, various Width, various Height, 5 mm Thickness S20 Steel High rolled profile with white powder coat finishes; elongated slot for Socket Head Screws M8 x 1.25 mm, 20 mm length bolted from connector profile to C-Channel

50 mm Width, 25 mm Depth, 4 mm Thickness S35 Steel C-Channel with white powder coat finishes; slot for Socket Head Screws M8 x 1.25 mm, 20 mm length bolted from connector profile to C-Channel; slot for Socket Head Screws M10 x 1.5 mm, various length bolted to metal profile

size varies Metal 3D Printed hollow reed profile with 3 - 5 mm thickness distribution with threading profile for bolt connection to bar; white powder coat finishes

length/ diameter/ thickness varies 30/30 Hollow Bar Profile welded with 10 mm washer for low Socket Head Screws; white powder coat finishes



SECTION
SCALE 1:10